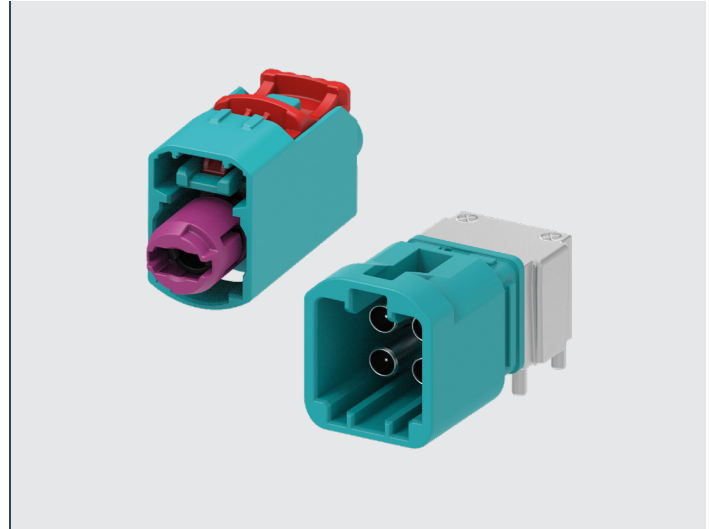


MATE-AX Miniaturized Coaxial Connectors

- Enabling up to 9 GHz performance for automotive applications
- Up to 75% PCB footprint reduction compared to standard FAKRA solutions



There is a growing need for RF Connectors with higher performance, reduced packaging and greater robustness for safety critical applications. TE Connectivity's MATE-AX miniaturized coaxial connector system provides advanced automotive data transmission performance supporting up to 9 GHz bandwidth, while supporting up to 75% PCB footprint reduction. The extensive portfolio, offering a wide range of connector types and sizes, can support all types of RF-based applications. By supporting existing wire types, MATE-AX connector enables flexible integration into existing coaxial architectures.

KEY FEATURES AND BENEFITS

- **Automotive Grade Robustness**
 - Fully compliant with LV214 & USCAR49 requirements
 - Anti-stubbing features prevent improper connections and pin damage
 - Fully protected terminals with inward-facing contact points
- **Space Reduction**
 - One of the shortest terminal on the market provides additional space in the installation area
 - Up to 75% PCB footprint reduction compared to standard FAKRA solutions
- **Manufacturing Efficiency**
 - Terminal design optimized for automated manufacturing
 - Support of existing wire types ensures integration into existing architectures
 - Global manufacturing footprint

APPLICATIONS

- **Cameras**
 - Surround View, Lane Assist, High Beam Assist, Blind Spot Detection, Traffic Sign Recognition, Rear View, Driver Monitoring, Gesture Control, Night Vision, Mirror Replacement
- **Antennas**
 - 4G, LTE, Smart 5G, Keyless Entry, Remote Parking, BT, WLAN, V2X, DSRC, C-V2X

SUPPORTED PROTOCOLS

- GMSL2/3
- FPD-Link III/IV
- APIX3
- MIPI
- ASA (Automotive SerDes Alliance)

LEARN MORE

- [MATE-AX Connector System Landing Page](#)
- [MATE-AX Connector System Video](#)
- [MATE-AX Connector System Brochure](#)
- [MATE-AX Connector System Whitepaper](#)